

# Accessibility Plan

Improve technology for communication  
(audio/visual/language options)



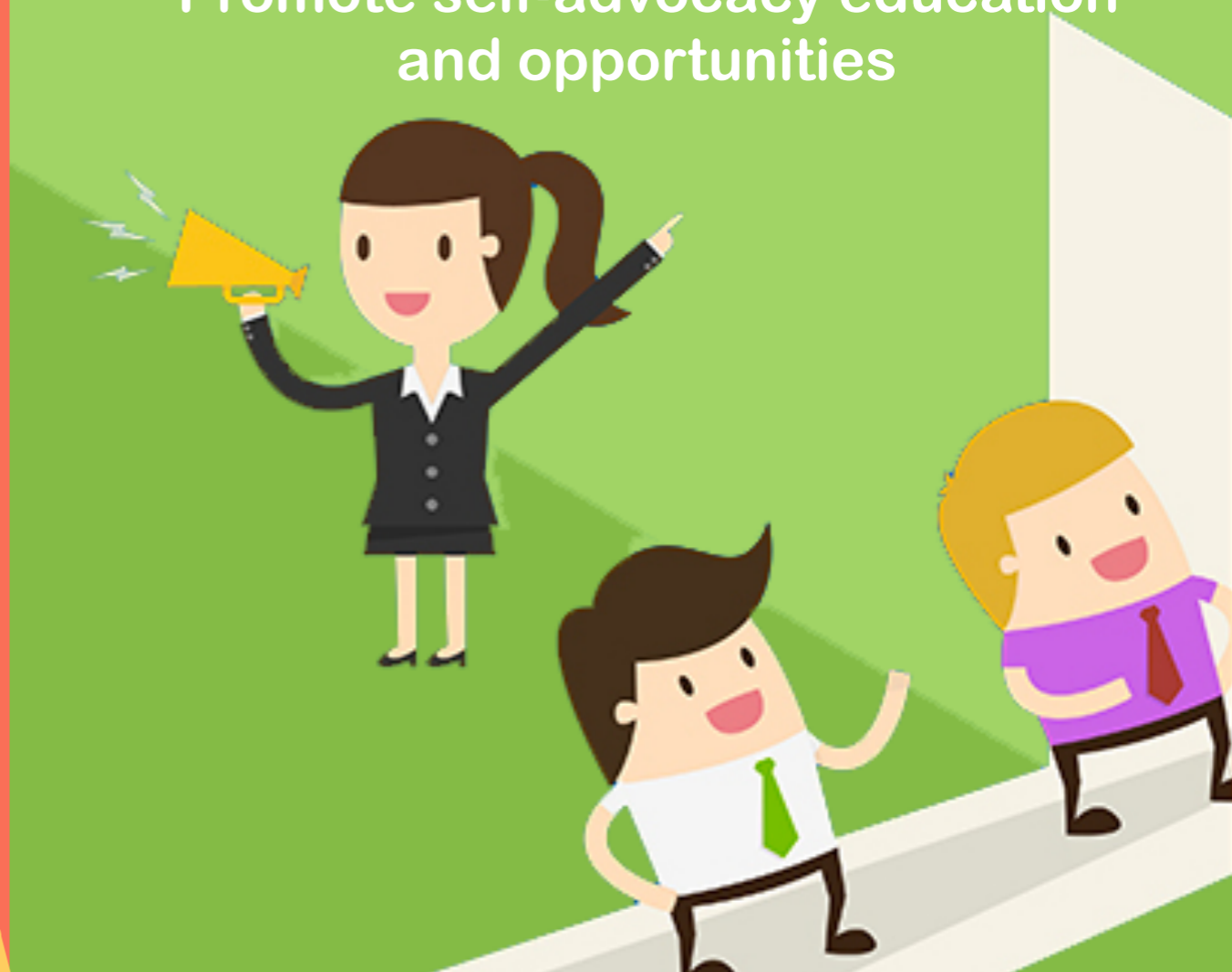
Provide individualized services and  
expand services to hard-to-reach  
populations



Seek input and feedback in a  
variety of methods



Promote self-advocacy education  
and opportunities



Maintain and promote safe and  
accessible locations and modes of travel



Participate in responsible advocacy for  
the social service sector



Recruitment and retention of  
employees with Integra family values



Uphold the Essence of Life

